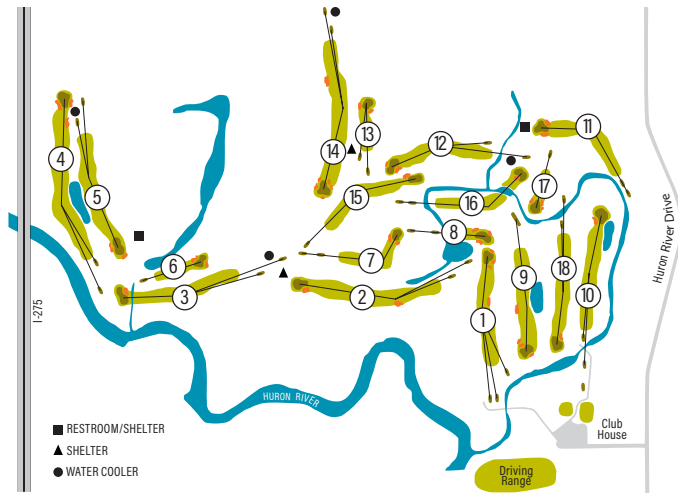


Willow Metropark

GOLF COURSE



USGA RULES OF GOLF WILL GOVERN ALL PLAY EXCEPT WHERE LOCAL RULES ARE APPLICABLE.

LOCAL RULES AND INFORMATION

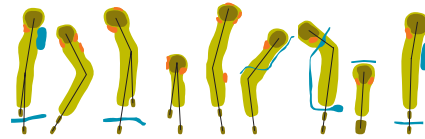
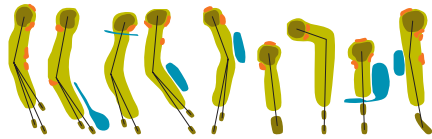
- Out of bounds is defined by white stakes and boundary fences.
- Water Hazards are defined by yellow stakes.
- Lateral Water Hazards are defined by red stakes.
- All heather and natural grass areas are to be played as lateral hazards for non-tournament play.
- Relief is afforded from all paths and roads.
- Never hit a shot unless you are sure the players in front of you are safely out of range.
- Please read all cart operation and safety instructions.
- Golf Carts and Pull Carts are not permitted on tees or within 30 feet of greens.
- A valid driver's license is required to operate a golf cart.
- Shirts and shoes must be worn at all times.
- In accordance with the Michigan Liquor Law, All Alcohol MUST be purchased on site. No outside coolers are allowed on any Metropark golf course.

Please help us keep your Metropark Golf Courses in pristine condition and always remember to replace/fill divots, repair ball marks, rake sand traps, and dispose of trash properly.

golf.metroparks.com • 734-753-4040 • 22900 Huron River Drive, New Boston, MI 48164



GOLF.METROPARKS.COM



Hole	1	2	3	4	5	6	7	8	9	OUT	Initial	10	11	12	13	14	15	16	17	18	IN	TOTAL	HCP	NET
Blue Tees 70.8/128	391	483	440	520	413	181	312	202	354	3296		468	338	386	172	523	330	358	146	377	3098	6394		
White Tees 69.1/123	360	469	422	506	395	166	297	179	339	3133		393	315	371	161	508	314	320	137	366	2885	6018		
Gold Tees 66.2/111	329	420	406	440	340	153	252	166	333	2839		327	259	260	155	435	304	290	127	290	2447	5286		
Men's Handicap	9	7	1	5	3	15	11	17	13			2	12	6	16	4	14	8	18	10				
Par Men	4	5	4	5	4	3	4	3	4	36		4	4	4	3	5	4	4	3	4	35	71		
+/-																								
Women's Handicap	7	3	5	1	9	17	13	15	11			8	14	12	18	2	4	6	16	10				
Gold Tees 71.6/122	329	420	406	440	340	153	252	166	333	2839		327	259	260	155	435	304	290	127	290	2447	5286		
Red Tees 70.4/120	319	409	396	431	332	153	252	126	325	2743		314	254	252	110	432	304	271	127	287	2351	5094		
Par Women	4	5	5	5	4	3	4	3	4	37		4	4	4	3	5	4	4	3	4	35	72		

Date: _____

Scorer: _____

Attest: _____

PACE OF PLAY

Please keep pace with the group ahead and play ready golf.

YARDAGE MARKERS

All Yardages are measured to the center of the green.

- Red ● 100 yards
- White ○ 150 yards
- Blue ● 200 yards

PIN POSITION

- Front ▶ Red
- Middle ▷ White
- Back ▲ Blue