

**USGA RULES OF GOLF WILL GOVERN ALL PLAY EXCEPT WHERE
LOCAL RULES ARE APPLICABLE.**

LOCAL RULES AND INFORMATION

- Out of bounds is defined by white stakes and boundary fences.
- Water Hazards are defined by yellow stakes.
- Lateral Water Hazards are defined by red stakes.
- All heather and natural grass areas are to be played as lateral hazards for non-tournament play.
- Relief is afforded from all paths and roads.
- Never hit a shot unless you are sure the players in front of you are safely out of range.
- Please read all cart operation and safety instructions.
- Golf Carts and Pull Carts are not permitted on tees or within 30 feet of greens.
- A valid driver's license is required to operate a golf cart.
- Shirts and shoes must be worn at all times.
- In accordance with the Michigan Liquor Law, All Alcohol **MUST** be purchased on site. No outside coolers are allowed on any Metropark golf course.

*Please help us keep your Metropark Golf Courses in pristine condition
and always remember to replace/fill divots, repair ball marks,
rake sand traps, and dispose of trash properly.*

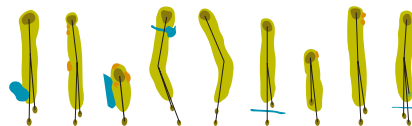
golf.metroparks.com • 734-426-0466 • 4800 Dexter-Pinckney Road, Dexter, MI 48130

Hudson Mills Metropark

GOLF COURSE



GOLF.METROPARKS.COM



Hole	1	2	3	4	5	6	7	8	9	OUT	Initial	10	11	12	13	14	15	16	17	18	IN	TOTAL	HCP	NET
Blue Tees 71.6/120	395	511	342	202	430	354	377	136	418	3165		362	399	151	478	498	424	237	399	447	3395	6560		
White Tees 70.5/118	379	496	332	192	421	343	361	127	406	3057		346	384	141	469	486	408	227	384	437	3282	6339		
Gold Tees 67.1/111	334	437	321	162	384	337	354	118	363	2810		311	331	132	407	410	314	159	329	403	2796	5606		
Par	4	5	4	3	4	4	4	3	4	35		4	4	3	5	5	4	3	4	4	36	71		
Handicap	5	13	15	7	1	11	9	17	3			16	8	18	12	10	4	6	14	2				
+/-																								
Gold Tees 72.3/125	334	437	321	162	384	337	354	118	363	2810		311	331	132	407	410	314	159	329	403	2796	5606		
Green Tees 70.8/121	328	428	321	152	378	331	345	118	357	2758		306	326	132	402	401	306	122	323	311	2629	5387		
Par	4	5	4	3	4	4	4	3	4	35		4	4	3	5	5	4	3	4	4	36	71		
Handicap	7	13	15	11	1	9	5	17	3			14	2	18	6	8	12	16	4	10				

Date: _____

Scorer: _____

Attest: _____

PACE OF PLAY

Please keep pace with the group ahead and play ready golf.

YARDAGE MARKERS

All Yardages are measured to the center of the green.

Red ● 100 yards
 White ○ 150 yards
 Blue ● 200 yards

PIN POSITION

Front ▶ Red
 Middle ▷ White
 Back ◀ Blue