

**USGA RULES OF GOLF WILL GOVERN ALL PLAY EXCEPT WHERE LOCAL RULES ARE APPLICABLE.**

#### LOCAL RULES AND INFORMATION

- Out of bounds is defined by white stakes and boundary fences.
- Water Hazards are defined by yellow stakes.
- Lateral Water Hazards are defined by red stakes.
- All heather and natural grass areas are to be played as lateral hazards for non-tournament play.
- Relief is afforded from all paths and roads.
- Never hit a shot unless you are sure the players in front of you are safely out of range.
- Please read all cart operation and safety instructions.
- Golf Carts and Pull Carts are not permitted on tees or within 30 feet of greens.
- A valid driver's license is required to operate a golf cart.
- Shirts and shoes must be worn at all times.
- In accordance with the Michigan Liquor Law, All Alcohol MUST be purchased on site. No outside coolers are allowed on any Metropark golf course.

Please help us keep your Metropark Golf Courses in pristine condition and always remember to replace/fill divots, repair ball marks, rake sand traps, and dispose of trash properly.

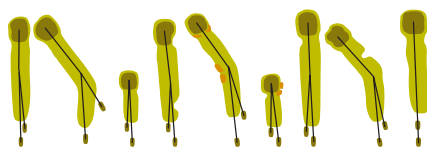
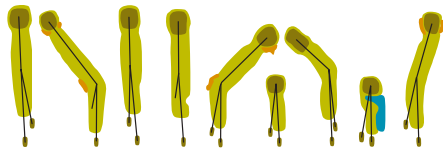
[golf.metroparks.com](http://golf.metroparks.com) • 810-227-8916 • 13760 High Ridge Drive, Brighton, MI 48114

Kensington Metropark

# GOLF COURSE



**GOLF.METROPARKS.COM**



Hole	1	2	3	4	5	6	7	8	9	OUT	Initial	10	11	12	13	14	15	16	17	18	IN	TOTAL	HCP	NET
Blue Tees 71.7/121	411	497	396	404	475	205	346	151	413	3298		377	389	198	380	493	173	374	415	424	3223	6521		
White Tees 70.7/117	398	486	385	390	462	193	335	138	399	3186		364	378	187	367	443	160	364	404	411	3078	6264		
White/Gold Combo 67.4/112	347	486	385	232	462	128	335	112	348	2835		364	300	153	367	443	141	364	361	362	2855	5720		
Gold Tees 64.6/107	347	389	307	232	398	128	289	112	348	2550		293	300	153	340	394	141	339	361	362	2683	5233		
Par	4	5	4	4	5	3	4	3	4	36		4	4	3	4	5	3	4	4	4	35	71		
Handicap	8	16	2	4	14	12	10	18	6			11	9	13	7	17	15	5	1	3				
+/-																								
Gold Tees 70.4/117	347	389	307	232	398	128	289	112	348	2550		293	300	153	340	394	141	339	361	362	2683	5233		
Green Tees 69.7/115	340	383	301	226	392	121	284	112	342	2501		288	293	146	335	372	136	334	355	356	2615	5116		
Par	4	5	4	4	5	3	4	3	4	36		4	4	3	4	5	3	4	4	4	35	71		
Handicap	4	8	12	16	6	14	10	18	2			15	11	17	7	9	13	5	1	3				

Date: \_\_\_\_\_

Scorer: \_\_\_\_\_

Attest: \_\_\_\_\_

#### PACE OF PLAY

Please keep pace with the group ahead and play ready golf.

#### YARDAGE MARKERS

All Yardages are measured to the center of the green.

Red ● 100 yards

White ○ 150 yards

Blue ● 200 yards

#### PIN POSITION

Front ▶ Red

Middle ▷ White

Back ◀ Blue